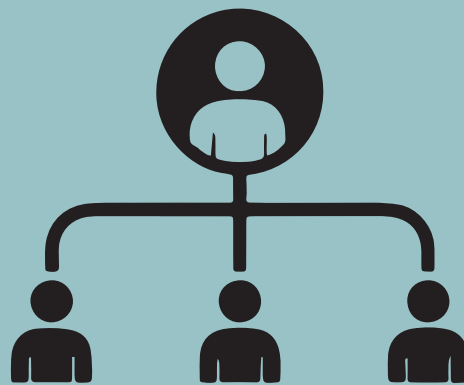


WE ARE DOING OUR BIT TO SUPPORT

TEST & TRACE

AND HELP PREVENT THE SPREAD
OF COVID -19



Please log onto our wi-fi when at the bar or your table and register yourself and your guests to support Government Guidelines

You will be asked to provide evidence that one of your group has registered

When inside the premises you can sit in groups of up to two households. When counting the number of households in a group, a support bubble is considered to be one household

Outside seating can accommodate groups of two households or a maximum group of six people from any number of households

Please note that failure to observe all the safety measures may result in service not being provided.

If a case is reported in this venue, one of the NHS trackers will contact you ask you to do a test. Your data will be deleted after 21 days and you won't receive any extra contact from us by registering for this service.